

DREAMS Don't *Work* Unless YOU Do...  
DREAMS Don't *Work* Unless YOU Do...

SSG



# Shri Residency

1, 1.5 & 2 BHK LUXURIOUS FLATS



**SHRI SAMARTH GROUP**

AN ISO 9001:2008 CERTIFIED

A Project by - Rohan Associates

# SPECIAL FEATURE

## AMBIENCE

- Grand entrance gate
- Elegant elevation
- Decorative compound wall
- Decorative entrance lobby
- Letter box & Name Plate for each Flat

## RECREATION

- Jogging Track
- Children's Play Area
- Sitting Area for Senior Citizen

## CONVENIENCE

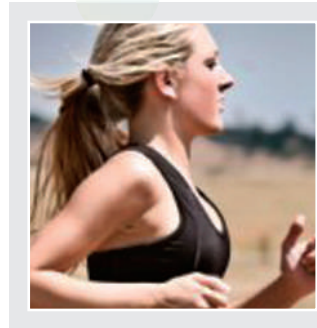
- 1 Automatic Lift with generator backup
- Solar water provision in bathrooms
- Power backup for common areas and water pump
- Ample parking
- Well-paved/concrete internal roads

## SAFETY & SECURITY

- Fire fighting system
- Fire stair case
- Security cabin at main entrance
- Well-marked internal roads

## ENVIRONMENTAL CARE

- Rainwater harvesting
- Tree plantation/vegetation









# SPECIFICATIONS

## WALLS

External wall of 6" thick brick work, single coat of sand face plaster.  
Internal partition walls to be 4" brick work with Niru finished plaster.

## FLOORING

2X2 Vitrified flooring, W.C. Bath Anti-Skid Ceramic Tile

## DOOR

Attractive Main Door with Decorative Door Skin  
Internal Flush Door with Oil Paint Finish

## KITCHEN

Granite kitchen top platform with S.S. sink  
Designer wall tiles up to lintel level

## WINDOW

3 track powder-coated aluminum sliding windows  
Marble Sill for all windows

## ELECTRIFICATION

Concealed copper wiring with modular switches  
TV & telephone points in living room and master bedroom  
Adequate light points in each room  
Ample light point in parking

## PLUMBING

Concealed plumbing work with Standard bathroom fittings  
Standard make Sanitary Fittings

## PAINTING

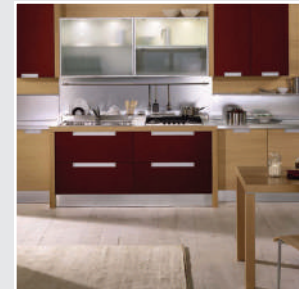
Water Proof Acrylic paint for the external face of the building.  
Oil bond distemper for the internal face of the apartment.

## BATHROOM & W.C.

Glazed tiles in W.C., bath up to lintel level with modern concepts.

## PARKING AREA

Paving blocks / Checkered tiles in attractive pattern.





SHRI RESIDENCY





# FIRST, THIRD, FIFTH & SEVENTH FLOOR PLAN



## SECOND, FOURTH & SIXTH FLOOR PLAN

# LOCATION MAP

## Key distances

Tata Motars	: 05 mins.
Pune Airport	: 25 mins.
Hinjewadi IT Park	: 30 mins.
ICC Center (Moshi)	: 07 mins.
KSB Chowk	: 05 mins.
Pune-Mumbai Bypass	: 15 mins.
Talawade IT Park	: 03 mins.
Chakan MIDC	: 15 mins.

## ARCHITECTS

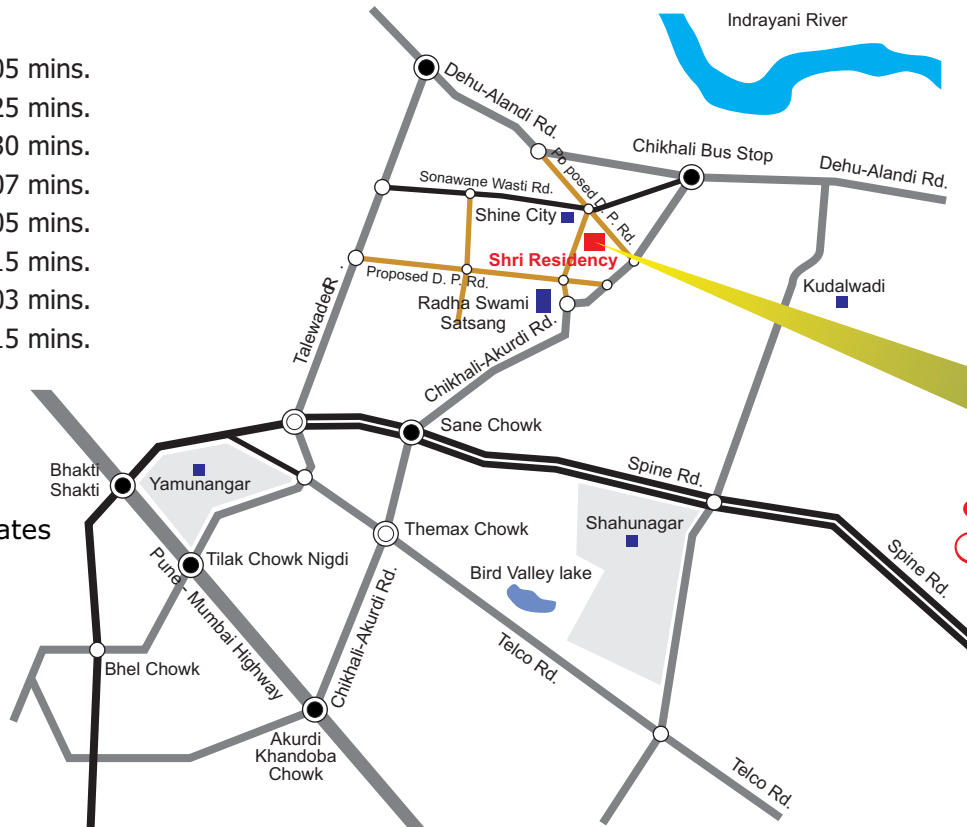
Patil & Bugade Associates

## R.C.C.

Hitesh Lahoti

## LEGAL

Adv. Nilesh B Kamthe



## Shri Residency

1, 1.5 & 2 BHK LUXURIOUS FLATS

Joint Venture  
PROJECT BY

**ROHAN ASSOCIATES**  
Developers, Promoters & Builders



**SHRI SAMARTH GROUP**

AN ISO 9001:2008 CERTIFIED

## SITE ADDRESS

Gat. No. 1192(P), Durga Nagar,  
Near Shine City, Sonawane Wasti  
Rd. Chikhali Pune - 412 114

## OFFICE ADDRESS

Gat No. 198, Opp. Priyadarshani School, Shri Samarth Nagar,  
Dehu-Alandi Road, Moshi, Tal. Haveli, Dist. Pune - 412 105.  
Office no. - 8007018080, 8007108080, 9657288768  
E-mail: info@shrisamarthgroup.com, sachin@shrisamarthgroup.com  
Visit us at: www.shrisamarthgroup.com

**For Booking Contact : 9822555424, 9860915777, 9850854746**