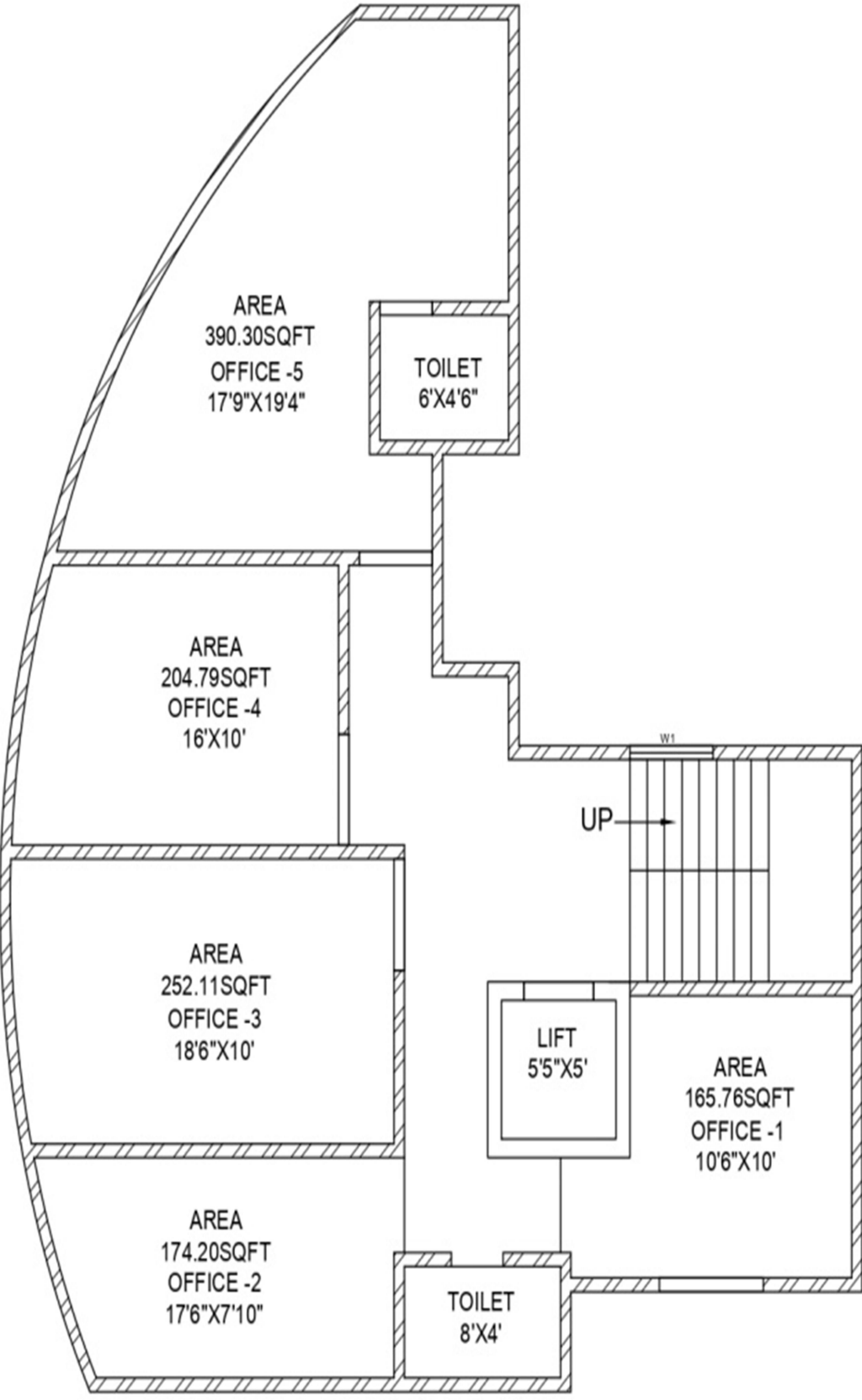




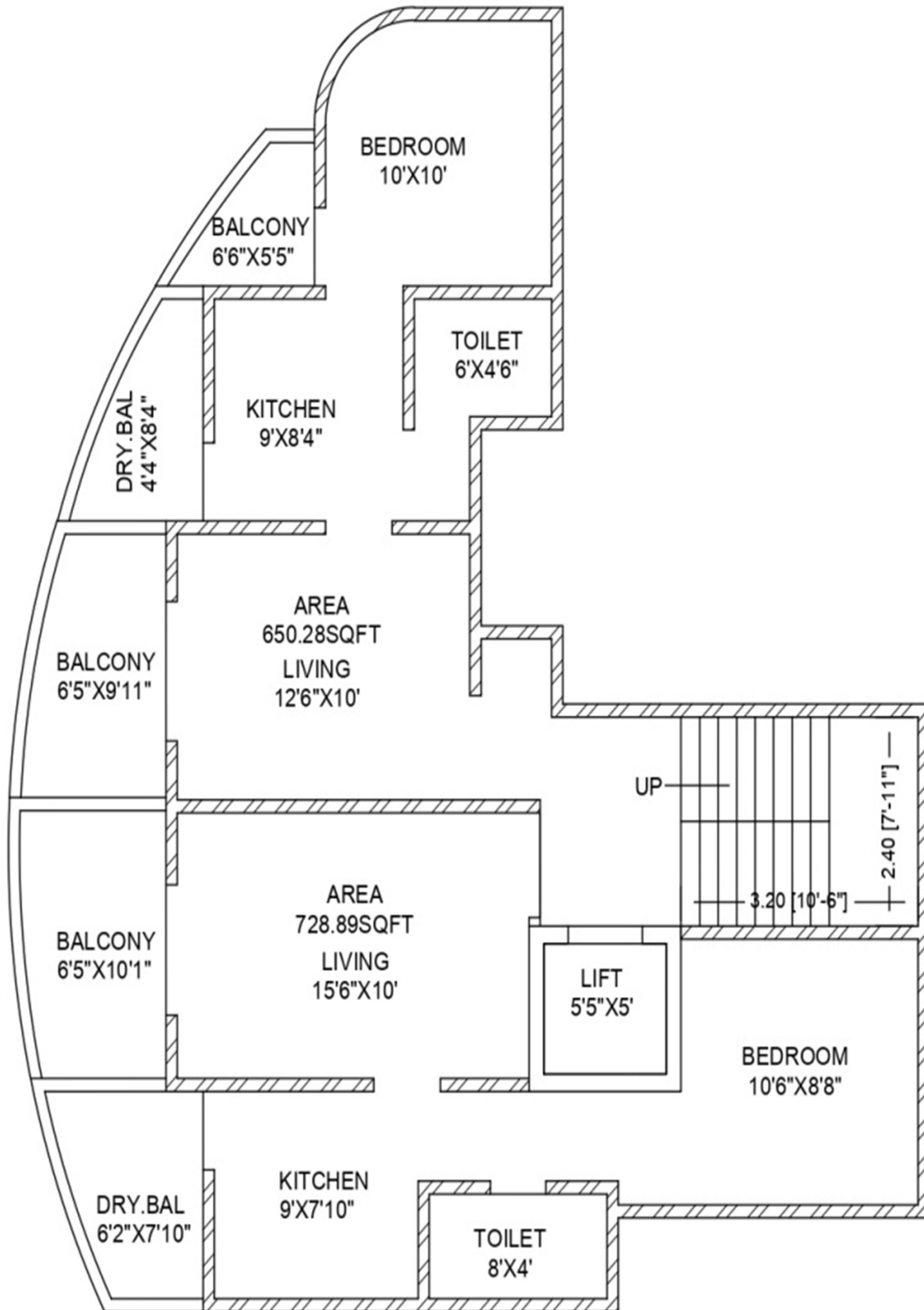
# Shri Corner

Value Plus Homes

@ Patil Nagar Chikhali , PCMC , Pune – 411062 .



**1ST FLOOR**



**2ND,3RD & 4TH FLOOR**

Comprising 1 & 2 BHK residences, Shri Corner is all set to transform the way you buy your dream home - without compromise, without extending your budget, and without any worries ! Instead, Shri Corner welcomes you to experience a meticulously planned and well-designed home that enriches your lifestyle with comfort, convenience, and celebration !



### **SPECIAL FEATURES OF HOMES**

- Value for money homes
- Liveable homes in affordable budget
- A dedicated entrance lobby
- Living room with dining area & terrance
- Specious bedrooms

## SPECIAL FEATURES OF PROJECT

- Exceptional security with CCTV Cameras for Common Areas .
- Well-connected to business hubs, entertainment centres, education and daily needs .
- Meticulously planned to ensure maximum utilization of space .
- Solar water heating system for common bathroom
- Exceptional safety with fire fighting system Rain water harvesting
- Battery backup for common areas Automatic elevators .

## Specifications

### STRUCTURE

- Earthquake resistant RCC framed structure with 5 inch fly ash bricks / AAC block

### PLASTER

- External sand faced plaster
- Internal gypsum / POP plaster

### WINDOWS

- 3 track powder coated aluminium sliding
- windows with mosquito net

### PAINTING

- Internal walls in oil bond distemper
- External walls in acrylic paint

## TOILET

- Decorative glazed tiles of size 300 x 450mm
- C.P. Fitting of Jaguar or equivalent brand
- Sanitarywares of Hindware or equivalent brand
- Provsion for exhaust fan & geyser

## KITCHEN

- Granite platform with SS sink
- Dado tiles upto lintel level above platform
- Provision for water purifier, Exhaust fan etc.
- Provision for washing machine in dry balcony

## ELECTRICAL

- Concealed fire resistant copper wiring of Polycab or equivalent brand
- Modular switches of Legrand or equivalent brand
- Provision for AC in master bedroom
- Provision for Inverter
- Provision for TV point, Telephone in living room

## FLOORING

- 2' x 2' Vitrified tiles in all rooms
- Anti skid tiles for bathrooms, dry balcony & terraces

## DOORS

- Main Door - Good quality laminated flush door with safety & necessary fitting
- Other Doors - good quality doors with necessary fitting